

HI!





Or aim for
better
testability...



ANSSI LEHTELÄ

TEST HARD



TESTABILITY in this talk means

SYSTEM

VISIBILITY

and

CONTROLLABILITY



CASE1

REPORTING TOOL

```
graph LR; A[COLLECT DATA] --> B[PROCESS DATA & RULES]; B --> C[REPORT DATA];
```

COLLECT
DATA

PROCESS
DATA & RULES

REPORT
DATA

CONTROLLABILITY?

WAIT TWO WEEKS...

COLLECT
DATA

PROCESS
DATA & RULES

REPORT
DATA

LIMITED READ ACCESS

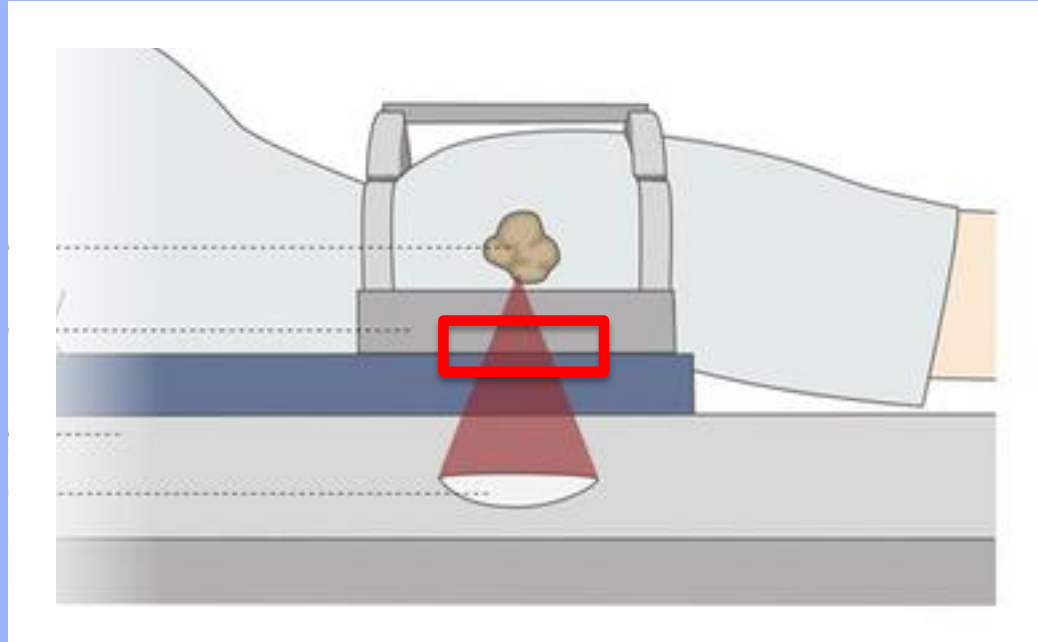
VISIBILITY?

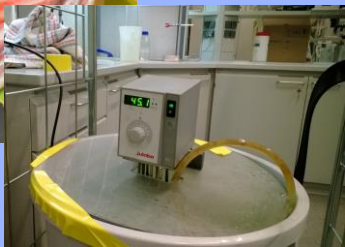


CASE2

MEDICAL DEVICE







→ 5 min

Simulate
input

Write result to file, or read
it from file



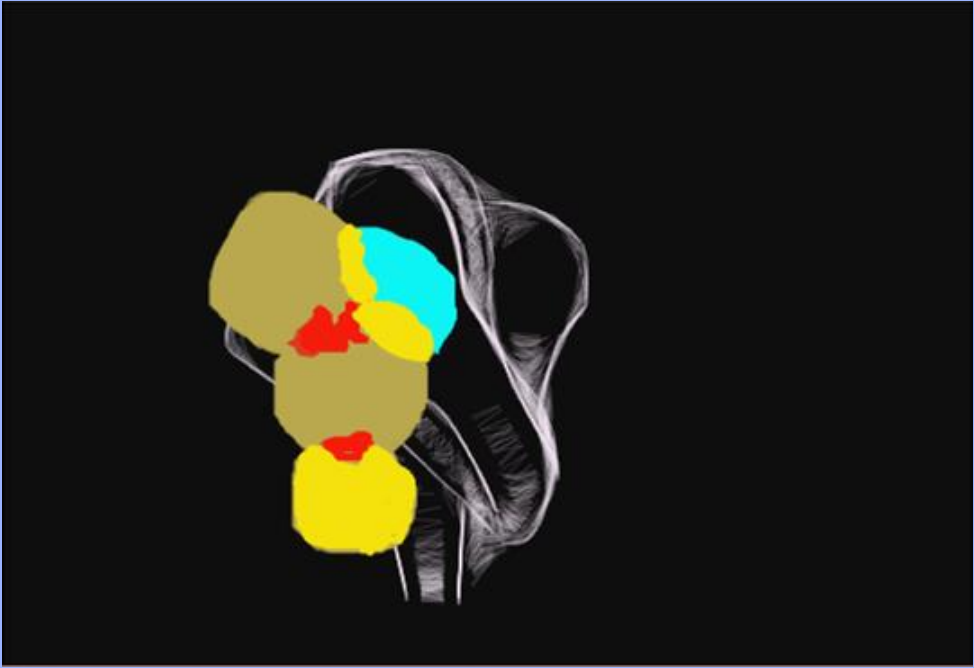
5 min

Log: Estimated temp

- + breakdown of temp estimate
- + duration of each step
- + all decision criterias

Draw an
overlay





Simulate
input

Write result
to file

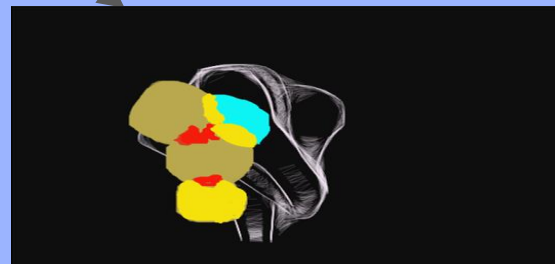
Read result
from file



5 min

Log: Estimated temp

- + breakdown of temp estimate
- + duration of each step
- + all decision criterias



SO

A few ways to move into a
better directions

...



HOW?



THINK





DISCUSS



PAIR





READ AND WRITE LOGS

THANKS!

Any questions?

You can find me at
Twitter @hellofatester
Email anssi.lehtela@visma.com



ANSSI LEHTELÄ

~~TEST HARD~~

CREDITS

Special thanks to all the people who made and released awesome resources for free:

- Presentation template by [SlidesCarnival](#)
- Photographs by [Unsplash](#)