

# Avoiding Environmental Pain

# Lim Sim

Twitter: @TestTheReality  
[www.codinglegends.com](http://www.codinglegends.com)

# Avoiding Environmental Pain



# Environments

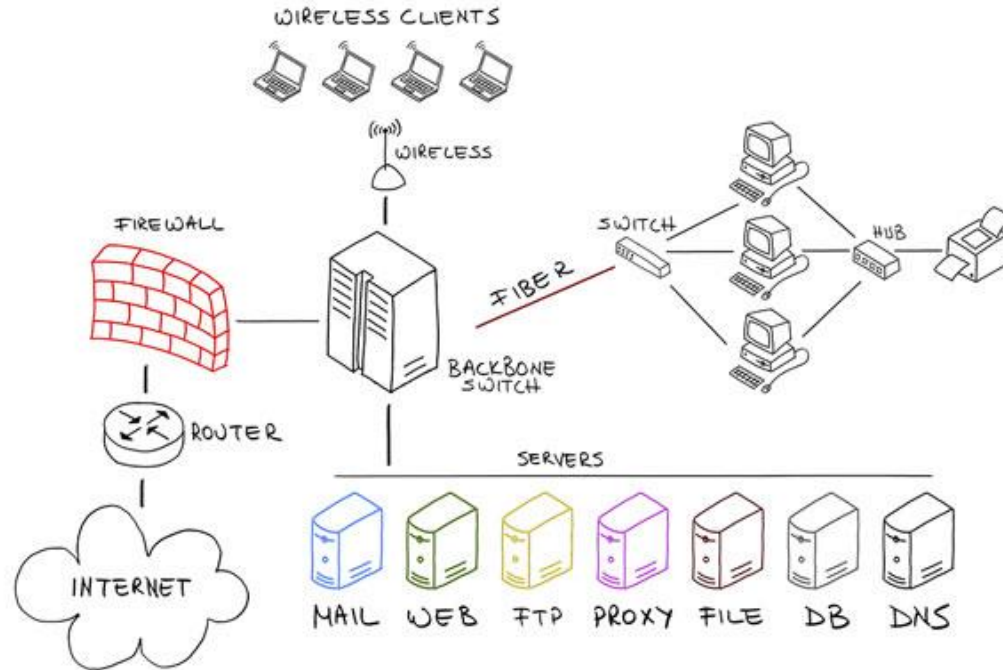


# Environments

---

- Different names
- Made of different parts

# Different layouts



# One environment

---

- Not the same configuration
- Not the same stack
- Version control? What's that?!

# Multiple environments

---

- Others can deploy to the environment.
- If something breaks in the environment then everyone is affected.
- Shared environment != shared problems = shared pain
- Environment creation was not reproducible



# Multiple Environments

**It wasn't me**



**I promise**

## What I would like...

- Self contained
- Stable
- Fast
- Able to reset / create data easily
- Test functionality / behaviour

# Eureka!!

---

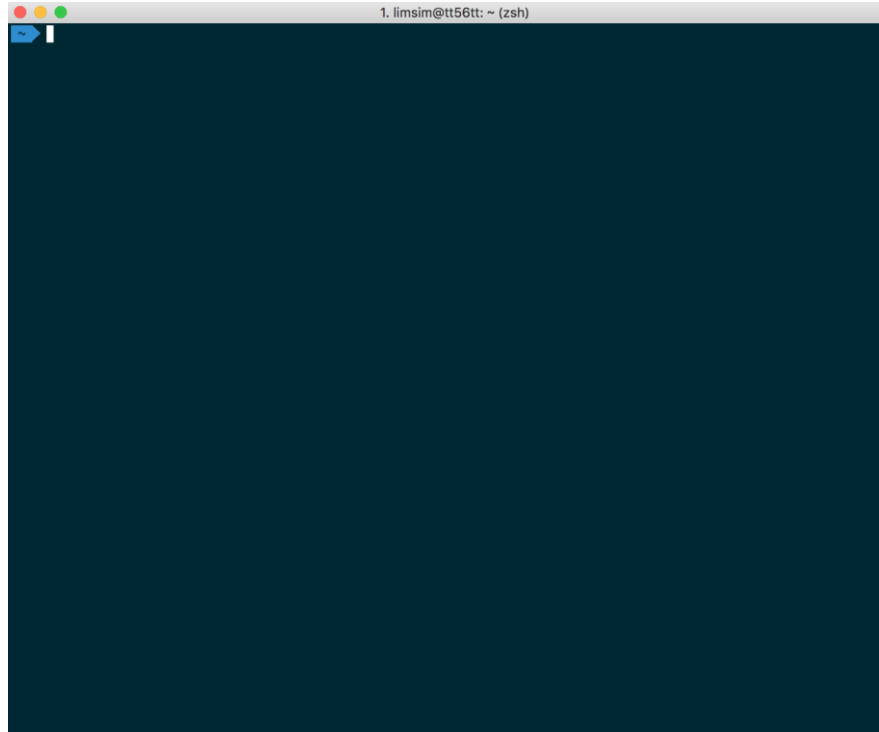
- Stop trying to test everything in a prod like environment
- Think about what is it that you are trying to achieve
- How about having a local environment
- Really??!

## How did we come to this conclusion?

---

- Used to test in locally, Dev, QA and Staging
- Most bugs were found locally
- Config bugs found in QA

# Demo time!



## What else

- Make deployments (and rollbacks) repeatable
- Standardise configuration
- Make environment creation repeatable

# What's the catch?



## What's the catch

---

- Can't test everything locally
- Need to have a strategy to deal with external systems
- Communication is still key
- Would really help if everything is repeatable



# Summary

---

- Think about doing the appropriate level of testing
- Testing locally done appropriately can be beneficial
- Repeatable process
- Can be done with simple tooling

# Questions

---

*If you only do what you can do, you'll never be better than what you are.*

~ Shifu (Kung Fu Panda 3)

# Thank You

## UNITED KINGDOM

+44 203 603 7830

[helloUK@equalexperts.com](mailto:helloUK@equalexperts.com)

Equal Experts UK Ltd

30 Brock Street

London NW1 3FG

## INDIA

+91 20 6607 7763

[helloIndia@equalexperts.com](mailto:helloIndia@equalexperts.com)

Equal Experts India Private Ltd

Office No. 4-C

Cerebrum IT Park No. B3

Kumar City, Kalyani Nagar

Pune, 411006

## CANADA

+1 403 775 4861

[helloCanada@equalexperts.com](mailto:helloCanada@equalexperts.com)

Equal Experts Devices Inc

205 - 279 Midpark way S.E.

T2X 1M2

Calgary, Alberta

## PORTUGAL

[helloPortugal@equalexperts.com](mailto:helloPortugal@equalexperts.com)

Equal Experts Portugal

Rua Tomás da Fonseca

- Torres de Lisboa

Torre G, 5º Andar

1600-209 Lisboa



LinkedIn

[linkedin.com/company/equal-experts](https://www.linkedin.com/company/equal-experts)



Twitter

[@EqualExperts](https://twitter.com/EqualExperts)



Web

[www.equalexperts.com](http://www.equalexperts.com)

